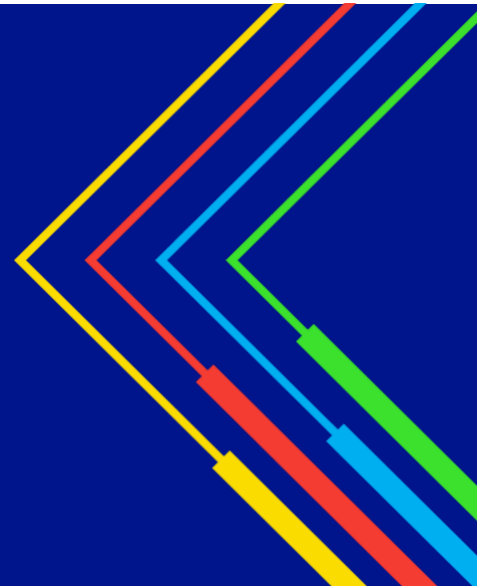


N12/M13 Transmission Line Upgrade Project

Fact Sheet



What is the N12/M13 Transmission Line Upgrade Project?

The N12/M13 Transmission Line Upgrade Project is a proposed reliability project to separate two transmission lines currently carried on one set of transmission structures. Separating the lines will reduce the chances of an outage affecting both lines. The wires will also be upgraded to support additional electric current.

The 1.8-mile segment of overhead power lines to be reconstructed begins on the west shore of the Taunton River in Somerset (Riverside Avenue at Pottersville Substation), crosses the river to Fall River, and continues east in an existing transmission corridor to the Sykes Road Substation.

The existing red and white river crossing towers – one in Somerset and one in Fall River - will stay in place for the N12 line. Next to each of those a Y-frame structure will be installed for the M13 line.

In most of the remaining right-of-way, each existing green lattice structure will be replaced with two steel monopoles. One set of monopoles will support the N12 line and one set will carry the M13 line.

Why is it needed?

This project is part of the Southeastern Massachusetts and Rhode Island transmission reliability program, or SEMA-Rhode Island, which was developed to address conditions studied by the Independent System Operator of New England (ISO-New England). The goal of the study was to identify and address reliability-based transmission needs in the SEMA-Rhode Island area for the year 2026.

To address the need for improved reliability, National Grid is investing in the electrical infrastructure in the greater Somerset and Fall River region through new construction and upgrades of substation and transmission lines.

When is the project happening?

Pending regulatory approvals, construction would begin in mid 2026, and the project would be placed in service in late 2027. The project will undergo a rigorous approval process with the Massachusetts Department of Public Utilities, as well as other federal, state and local agencies.

How can I learn more?

Our Project team is committed to ensuring that community members in Somerset and Fall River are kept up-to-date with the latest Project information. We have established a Project-specific webpage at www.southcoastreliabilityprojects.com and community members can contact Project staff directly through our toll-free hotline number 1-833-233-7277 or via email at info@southcoastreliabilityprojects.com.